

**Margaret A. Cunzio**

Minority Leader, Legislator, 3rd District



Committee Assignments:  
Rules, *Co-Chair*  
Public Safety, *Vice Chair*  
Legislation

## **MEMORANDUM**

To: Vedat Gashi, Chair, Board of Legislators

From: Margaret Cunzio, Legislator District 3

Date: December 15, 2025

Re: Communication: request for removal from Westchester County Saw Mill  
Sanitary Sewer District – 621 Chappaqua Road.

---

Please add the attached communication to the agenda of the next available  
Board of Legislators meeting for referral to the appropriate committees.



**CARL FULGENZI**  
*Supervisor*

November 8, 2025

Honorable Margaret A. Cunzio  
Westchester County Board of Legislators  
800 Michaelian Office Building  
148 Martine Avenue, 8th Floor  
White Plains, New York 10601

Re: Request for removal from Westchester County Saw Mill Sanitary Sewer District

Dear Honorable Cunzio,

Enclosed is a certified copy of Town Board Resolution 400-25 for the following property owner who has requested removal from the County Saw Mill Sewer District.

<u>Name</u>	<u>Tax Map</u>	<u>Address</u>
Ali Javed	91.17-1-5	621 Chappaqua Road

Also enclosed is a copy of the town tax map for this parcel. Please have this request processed for removal from the County Saw Mill Sewer District.

Sincerely,

Carl Fulgenzi, Town Supervisor



EMILY COSTANZA  
Town Clerk

EXTRACT OF THE MINUTES  
OF THE REGULAR MEETING  
OF THE TOWN BOARD  
TOWN OF MOUNT PLEASANT  
WESTCHESTER COUNTY, NY  
HELD OCTOBER 28, 2025

Authorization to Remove 621 Chappaqua Road from County Saw Mill Sewer District

RESOLUTION 400-25

Upon motion of Councilwoman Zaino, seconded by Councilman Saracino and unanimously carried, it was,

WHEREAS, certain property owner(s) have requested removal of their property from the Westchester County Saw Mill Sewer District; and

WHEREAS, it is believed by the Town of Mount Pleasant that the property satisfies all criteria set forth by the Westchester County Department of Environmental Facilities (WCDEF) for removal of a property from the tax base; and therefore be it

RESOLVED, that the Westchester County Board of Legislators is requested to remove the following parcel from the Westchester County Saw Mill Sanitary Sewer District:

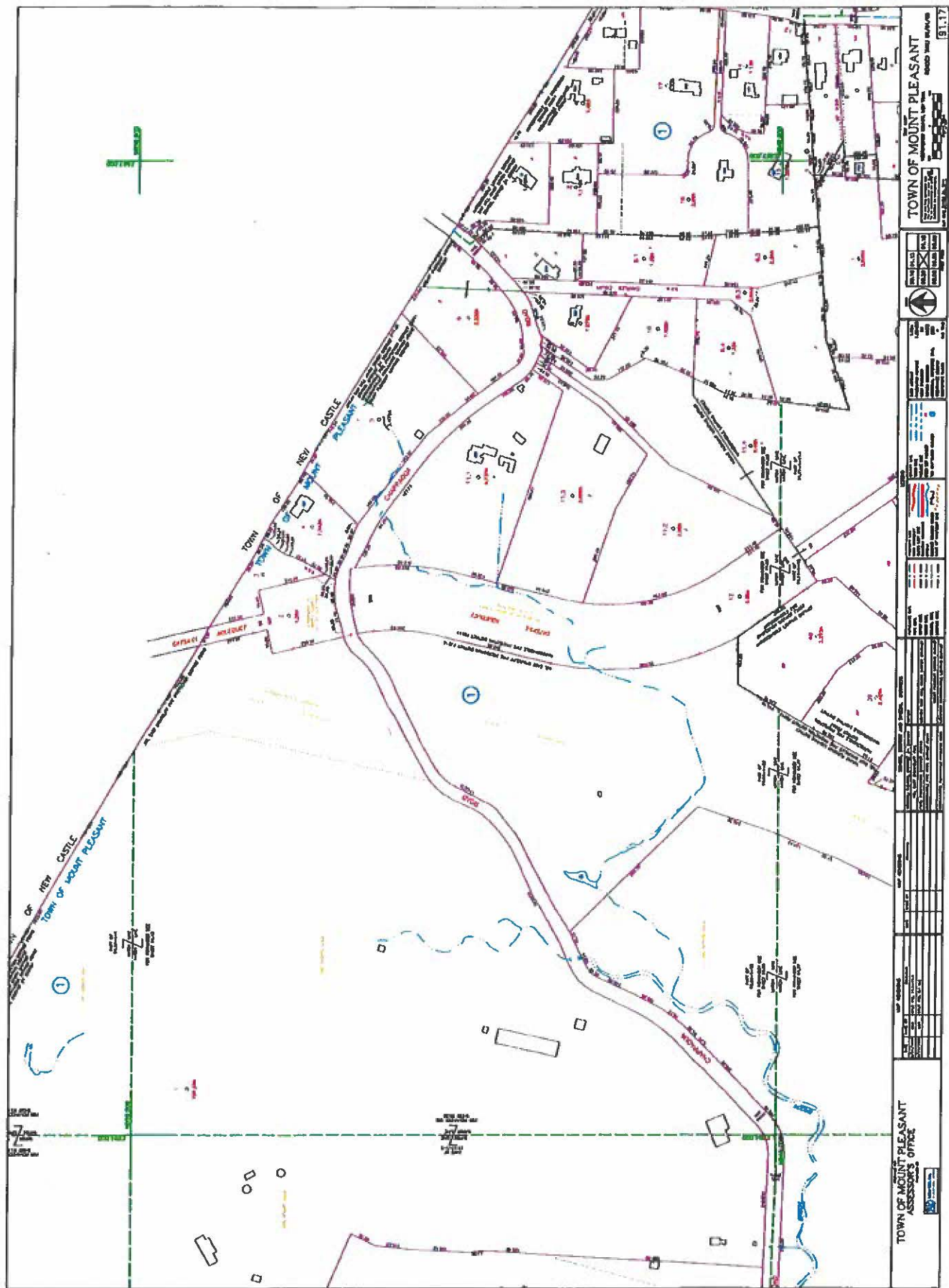
Name	Address	Tax Map
Ali Javed	621 Chappaqua Road	91.17-1-5

VOTE - AYES - Town Supervisor Fulgenzi, Councilwoman Zaino, Councilman Sialiano, Councilwoman Smalley, Councilman Saracino

Emily Costanza

EMILY COSTANZA  
TOWN CLERK  
TOWN OF MOUNT PLEASANT





TOWN OF MOUNT PLEASANT  
 91.17



Legend

Blue line	Water
Green line	Park
Pink line	Property boundary
Black line	Road
Red line	Highway
Yellow line	Utility line
Black dot	Well
Black square	House
Black circle	Tree
Black triangle	Corner
Black cross	Intersection
Black star	Center
Black circle with cross	Well
Black square with cross	House
Black circle with dot	Tree
Black triangle with dot	Corner
Black cross with dot	Intersection
Black star with dot	Center

Blue line	Water
Green line	Park
Pink line	Property boundary
Black line	Road
Red line	Highway
Yellow line	Utility line
Black dot	Well
Black square	House
Black circle	Tree
Black triangle	Corner
Black cross	Intersection
Black star	Center
Black circle with cross	Well
Black square with cross	House
Black circle with dot	Tree
Black triangle with dot	Corner
Black cross with dot	Intersection
Black star with dot	Center

Blue line	Water
Green line	Park
Pink line	Property boundary
Black line	Road
Red line	Highway
Yellow line	Utility line
Black dot	Well
Black square	House
Black circle	Tree
Black triangle	Corner
Black cross	Intersection
Black star	Center
Black circle with cross	Well
Black square with cross	House
Black circle with dot	Tree
Black triangle with dot	Corner
Black cross with dot	Intersection
Black star with dot	Center

Blue line	Water
Green line	Park
Pink line	Property boundary
Black line	Road
Red line	Highway
Yellow line	Utility line
Black dot	Well
Black square	House
Black circle	Tree
Black triangle	Corner
Black cross	Intersection
Black star	Center
Black circle with cross	Well
Black square with cross	House
Black circle with dot	Tree
Black triangle with dot	Corner
Black cross with dot	Intersection
Black star with dot	Center

TOWN OF MOUNT PLEASANT  
 ADDRESS